



›THIS IS THE WAY

WE MOBILIZE BUSINESS

›THIS IS NORTTEL™

Solution Brief

BlackBerry Enterprise Solution from Nortel

Nortel and Research In Motion have partnered to provide enterprise users with access to telephony and multimedia applications on one of the world's most popular handhelds.

Nortel has teamed up with Research In Motion to harness the power of the Multimedia Communication Server (MCS) 5100 on RIM's BlackBerry handheld, bringing presence-based instant messaging (IM) and collaborative capabilities to today's mobile workforce. For on campus communications, RIM's newest SIP-enabled handheld — the BlackBerry 7270 Wireless Handheld™ — is the first device available to the market that is using the power of Nortel's Multimedia Communication network on any 802.11b Wireless Local Area Network (WLAN). Enterprise users can securely take their desktop telephony, instant messaging, presence management, email, company directory and more with them as they roam their company's facilities.

Mobilizing business applications

Supported by Nortel's vision that enterprise users benefit from a consistent application experience

across all types of access, the BlackBerry Enterprise Solution from Nortel provides enterprise users with unprecedented freedom and flexibility through standards-based access to communications capabilities including:

- › Session Initiation Protocol (SIP)-based telephony on the go
- › Instant messaging enabling collaboration

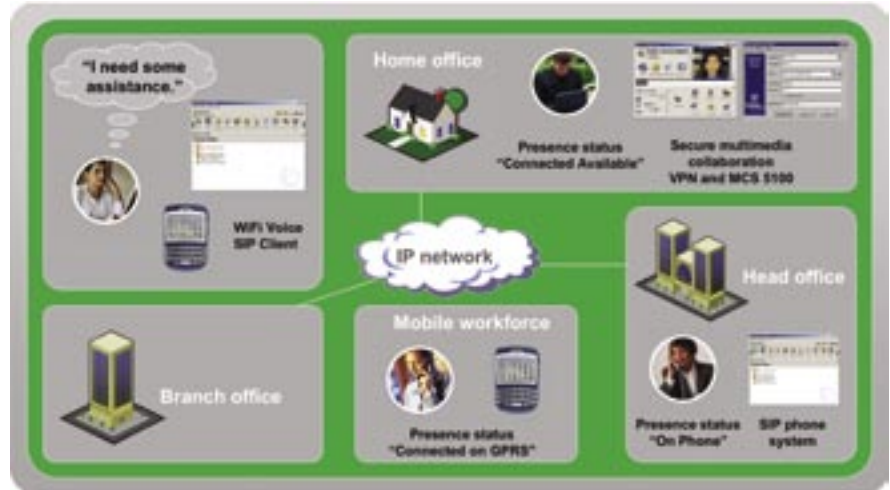
- › Access to corporate directories and other information resources
- › Leverage of existing infrastructure investments
- › Integration with existing company security architecture
- › Wireless access to intranet and Internet applications
- › Presence management enabling more productive communications



Minimum requirements

- > Multimedia Communications Server 5100
- > Nortel VPN Router 1010 (formerly known as Contivity 1010)
- > 802.11b, GSM/GPRS, CDMA or ESMR/Nextel
- > BlackBerry Enterprise Server™ v4.0
- > BlackBerry handheld

SIP connects the mobile workforce



TRC
TELECOM RESOURCE CORPORATION
trcnetworks.com

Have A Question?
Need More Info?
Call Us: 1 877 390 1166